



# Monument School District

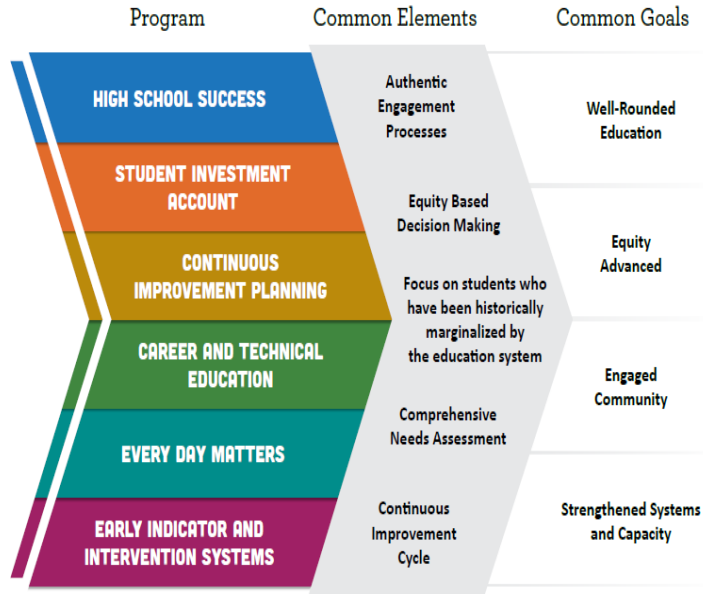
## 2025-27 Integrated Application

# Background

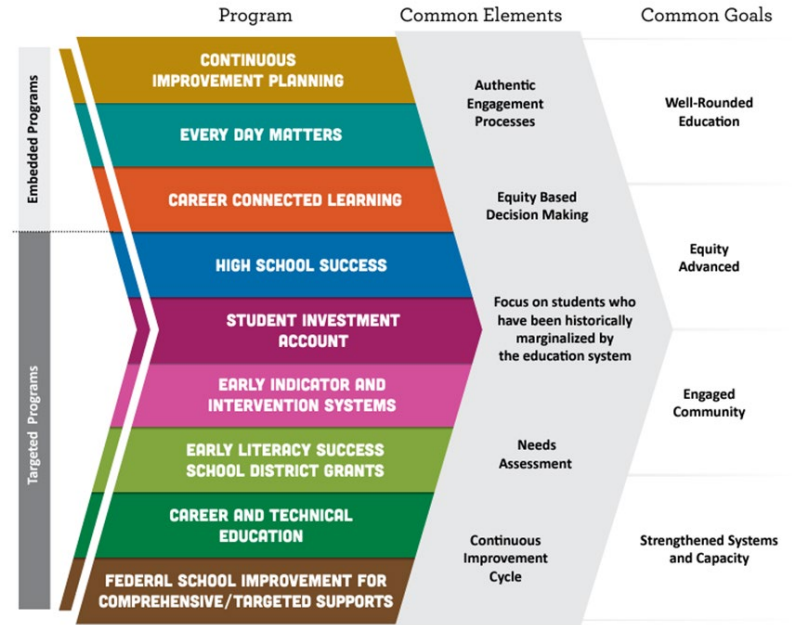
- Integration effort was responsive to requests from educational leaders and state legislators
- Combined processes for community engagement, needs assessment, planning, budgeting and evaluation for nine programs
- Designed to reduce burden and redundancies and improve the framework by which progress can be measured over time

# Programs & Common Goals

## 2023/25 Biennium



## 2025/27 Biennium



# Summary of Program Purposes

**High School Success (HSS)** - Systems to improve graduation rates and college/career readiness.

**Student Investment Account (SIA)** - To meet students' mental health, behavioral needs and increase academic achievement/reduce disparities for student focal groups.

**Early Literacy Success School District Grants (ELGSSG)** - Grants to school districts in order to Increase early literacy for children from birth to third grade, reduce literacy academic disparities for student groups that have historically experienced academic disparities, increase support to parents and guardians around literacy, and to increase access to early literacy learning through support that is research-aligned, culturally responsive, student-centered and family-centered.

**Early Indicator and Intervention System (EIIS)** - The development of a data collection and analysis system, in which educators collaborate, to identify supports for students.

# Community Engagement/Needs Assessment Highlights

What we see through survey engagement

- Continue what is working
  - Intervention
  - Counseling
  - Opportunities
  - Student Support
- Constructive
  - More Opportunities

# These priorities emerged:

- Continue Intervention Support
- Continue Counseling Services
- Support Opportunities
- Continue Working on Attendance and Student Support
- Early Literacy Requirements

[Link to Application](#)

# Our intended outcomes are:

- A. Improve students outcomes in core subjects**
- B. All Students' social and emotional needs are supported**
- C. Create a well-rounded education for students that enhances class options and opportunities, and after-school opportunities, resulting in students graduating with at least one career/secondary training goal to achieve**
- D. Students who attend school regularly will improve academically and socially**
- E. A system and culture is established where the school is the nucleus of the community and fosters ongoing community engagement**
- F. K–3 students will demonstrate increased proficiency in early literacy skills**

# These key strategies will help us achieve our intended outcomes:

- Increase student supports and opportunities for student interventions
- Identify and address student social, emotional, and behavioral needs
- Invest in new curriculum, supplies, supports, opportunities, and class electives to enhance classes, and create new options for students
- PD for staff members
- Provide for school and community events with a safe and equipped location to provide educational and social events.



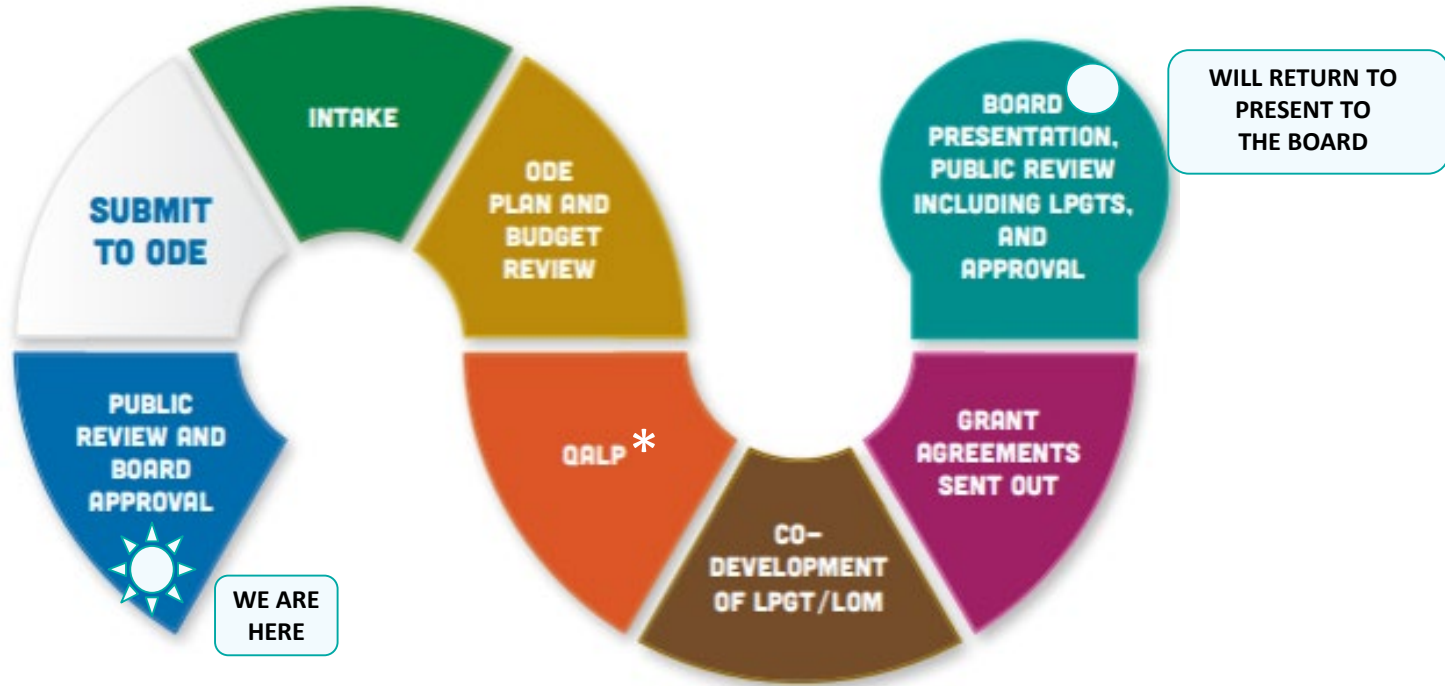
# Key Investments:

Program Amounts				
SIA	HSS	Early Literacy	EIIS	Total
\$140,237.94	\$43,097.27	\$62,546.20	\$164.73	<b>\$246,048.14</b>

- Intervention Teacher & Aide
- School Counselor & Mental Health Counselor
- Technology Upgrades
- Student Supports (Snacks Attendance Incentives, etc.)
- Extra Opportunities for Students & Enhancing Class Opportunities
- Reading Endorsements for Early Literacy

[Link to Full Budget Spreadsheet](#)

# What Happens Next?



# Questions & Comments

